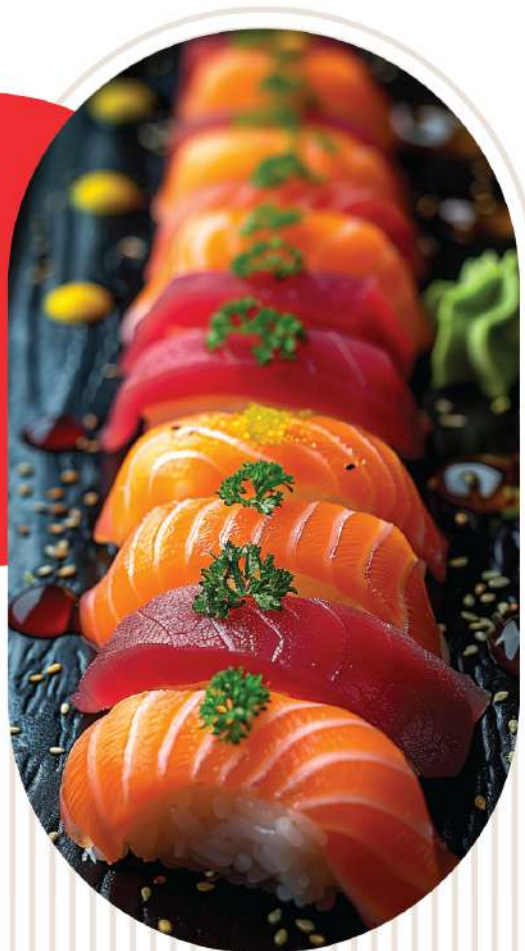


# NIGIRI (2pcs)



- Salmon \$5.5
- Salmon Avocado \$6
- Salmon Onion Wasabi Mayo \$6
- Salmon Belly Truffle Paste \$7
- Seared Salmon \$6
- Spicy Seared Salmon \$6
- Snapper \$6
- Kingfish \$6.5
- Spicy Seared Kingfish \$7
- Scallop \$6
- Seared Scallop \$6.5
- Spicy Seared Scallop \$6.5
- Prawn \$5.5
- Spicy Seared Prawn \$6
- Tuna \$6.5
- Spicy Tuna \$7
- Top Shell \$5
- Pink Shrimp \$5.5
- Scampi \$17

# NIGIRI (2pcs)

- Squid \$5
- Spicy Seared Squid \$5.5
- Kanikama(Crab Meat) \$4.5
- Egg Omelette \$4.5
- Seared Egg Omelette \$5
- Spicy Seared Egg Omelette \$5
- Octopus \$5
- Shime Saba(Mackerel) \$5.5
- Eel \$7
- Wagyu Tadaki \$6
- Wagyu Yakiniku \$6.5
- Breadcrumbs Prawn \$5.5
- Chicken Katsu Avocado \$5.5
- Tempura Vege \$5
- Tempura Pumpkin \$5



# ROLL - 12

## Medium Roll (4pcs)



- Salmon Avocado \$6
- Cooked Tuna Salad Avocado \$5
- Spicy Raw Tuna Cucumber \$7
- California \$5.5
- Teriyaki Chicken Avocado \$5.5
- Chicken Katsu Avocado \$5.5
- Spicy Chicken Katsu Cucumber \$5.5
- Vegetable \$4.5
- Crunchy Chicken \$5.5
- Cream Cheese Chicken \$6
- Breadcrumbs Prawn Vege \$5.5

## Special Roll (2pcs)



- Soft Shell Crab (3pcs) \$7
- Salmon Wasabi Mayo \$6
- Soy Mayo Crab Breadcrumbs Prawn \$6
- Cream Cheese Eel \$7
- Teriyaki Salmon Duo \$6.5
- Volcano \$6.5

## Baby Roll (6pcs)



- Baby Salmon \$5
- Baby Cook Tuna Salad \$4.5
- Baby Avocado \$4.5
- Baby Cucumber \$4.5
- Baby Chicken Katsu \$5
- Baby Teriyaki Chicken \$5
- Baby Fresh Tuna \$6
- Baby Egg Omellette \$4.5

# HANDROLL てまきずし

---

Fresh Salmon Avocado \$6

Fresh Tuna Avocado \$7

Cooked Tuna Salad Avocado \$5

Cooked Tuna Salad Cucumber \$5

California \$5.5

Teriyaki Chicken \$5.5

Vege Tempura \$5

Avocado Cucumber \$4.5

Breadcrumbs Prawn Tartar \$6

Soft Shell Crab tartar \$7

Eel Cream Cheese \$7

Eel Egg \$7

Soft Shell Crab Omelette \$7

Scallop Omelette \$6.5

Prawn Omelette \$6.5

Prawn Tempura \$6

Wagyu Beef \$6.5

Wagyu Beef Omelette \$7



# SHIP

# 船かんまき

Cooked Tuna Salad \$5

Tobiko \$6

Seaweed Salad \$5

Lobster Salad \$5.5

Plain Inari \$4.5

Inari Seaweed Salad \$5.5

Inari Lobster Salad \$6

Salmon Family \$7

Salmon Roe \$7

Salmon & Salmon Roe \$7



# SASHIMI (6pcs)

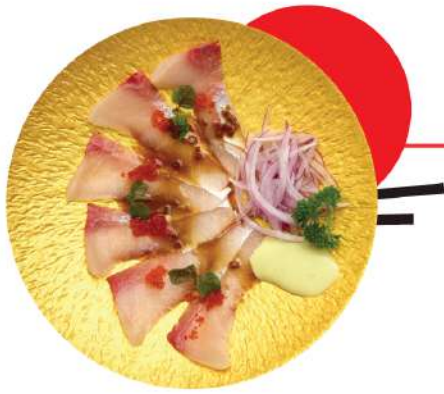
Salmon \$16

Tuna \$17

Kingfish \$17

Assorted \$17

Scampi (2pcs) \$16



# CARPACCIO

Kingfish \$19.5

Salmon \$19.5

## SIDE DISHES

Miso Soup \$4

Edamame \$5.5

Seaweed Salad \$6

Agedashi Tofu \$8

Spring Roll (2pcs) \$4.5

Crab Claw (2pcs) \$6.5

Takoyaki (4pcs) \$6.5

Plain Rice \$4

Karaage Chicken \$11

Vegetable Gyoza Pan Fried (6pcs) \$12

Pork Gyoza Pan Fried (6pcs) \$13

Vegetable Tempura (6pcs) \$12.5

Prawn Tempura (4pcs) \$14

Assorted Tempura (2pcs Prawn+6pcs Vegetable) \$19



# HOT FOOD

ホットフード

- Tonkotsu Ramen \$18
- Plain Mini Udon \$10.5
- Tempura Vege Mini Udon \$13.5
- Tempura Prawn Mini Udon \$14.5
- Wagyu Beef Mini Udon \$14.5
- Plain Mini Curry Udon \$11.5
- Wagyu Beef Mini Curry Udon \$15.5
- Chicken Katsu Donburi \$18
- Chicken Katsu Curry Donburi \$18



**NORI TABLE**  
SUSHI TRAIN



# DRINKS

ドリンク

- Hot Green Tea With Pot \$5
- Franklin Water 600ml \$4
- Coca Cola 375ml \$4
- Coca Cola Zero 375ml \$4
- Sprite 375ml \$4
- Fanta 375ml \$4
- Calpis 335ml \$4
- Cold Green Tea 335ml \$4
- Cold Oolong Tee 300ml \$4
- Ramune \$4.5
- Coconut Water 320ml \$4.5
- San Pellegrino Sparkling Water 500ml \$6.5
- Japaness Ice Tea (Peach) \$5



# DESSERT

デザート

- Matcha Ice Cream \$5.5
- Black Sesame Ice Cream \$5.5
- Matcha Cheese Cake \$6.5





# CATERING

Custom Platters Available

Text the number

**0494 158 386**

To place your order

Order at least 1 day  
in advance of pick up

📍 388 Oxford street, Paddington NSW 2021

📷 NORI TABLE \_PADD0 @Nori Table/Sushi Train

☎️ 0494 158 386

🕒 Opening hour: Mon-Wed 11:00 - 20:30  
Thurs-Sat 11:00 - 21:00  
Sun 11:00 - 20:00