

FRESHLY MADE DAILY ONIGIRI

\$5.5



VG GF

PLUM

\$5.5



VG GF

TERIYAKI
TOFU

\$5.5



VG GF

MISO
EGGPLANT

\$5.5



V GF

MUSHROOM
& CHEESE

\$5.5



V GF

SOFT EGG

\$5.5



LOBSTER
SALAD

\$5.5



GF

TERIYAKI
SALMON

\$5.5



GF

TUNA
MAYO

\$5.5



GF

MENTAIKO
MAYO

\$5.5



GF

WASABI
PRAWN

\$5.5



BEEF
SUKIYAKI

\$5.5



SPAM
& EGG

\$5.5



YUZU
PORK BELLY

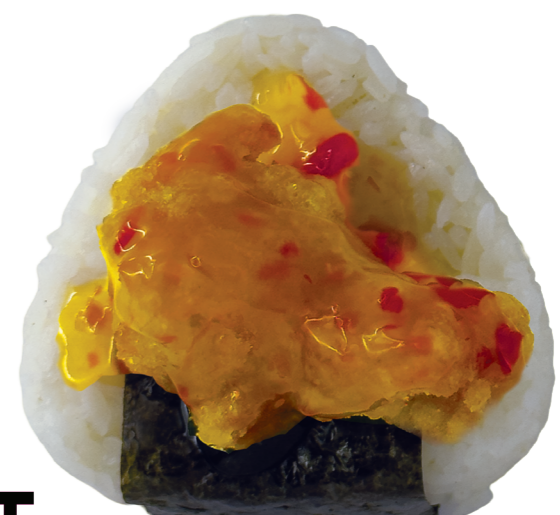
\$5.5



GF

GRILLED
CHICKEN

\$5.5



SWEET
CHILI KARAAGE

\$5.5

SPECIAL ONIGIRI

MADE TO ORDER



SUKIYAKI M9 WAGYU

\$15



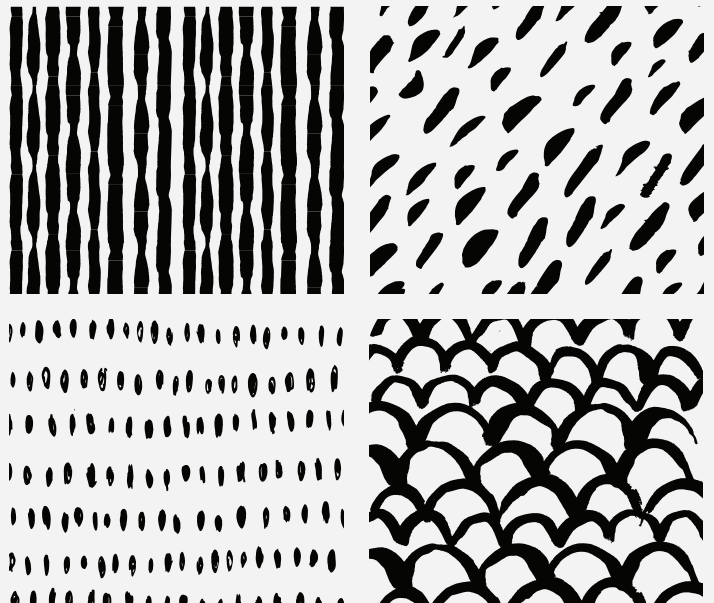
ABURI SALMON

\$15



WAGYU BURGER STEAK

\$15



SALMON AND ROE

\$15



GRILLED UNAGI

\$15

MATCHA

Series



HOT
MATCHA
LATTE

Ⓡ \$7.5
Ⓛ \$8

ICED
MATCHA
LATTE

Ⓡ \$8.5
Ⓛ \$9

ICED
GREEN CLOUD
MATCHA

Ⓡ \$9.5
Ⓛ \$10

ICED
SPARKLING
MATCHA

Ⓡ \$9
Ⓛ \$9.5

ICED
SPARKLING
YUZU MATCHA

Ⓡ \$9.5
Ⓛ \$10

ICED
STRAWBERRY
MATCHA LATTE

Ⓡ \$9.5
Ⓛ \$10

ICED
STRAWBERRY
SPARKLING
MATCHA

Ⓡ \$9
Ⓛ \$9.5

ICED
MATCHA LATTE
WITH
SOFT SERVE

Ⓡ \$11.5
Ⓛ \$12

HOJICHA

Series



HOT
HOJICHA
LATTE

Ⓡ \$7.5
Ⓛ \$8

ICED
HOJICHA
LATTE

Ⓡ \$8.5
Ⓛ \$9

ICED
CLOUD
HOJICHA

Ⓡ \$9.5
Ⓛ \$10

ICED
SPARKLING
HOJICHA

Ⓡ \$9
Ⓛ \$9.5

SOFT SERVE



MATCHA
SOFT SERVE

\$5.9

HOKKAIDO MILK
SOFT SERVE

\$5.9

JAPANESE TEA

HOJICHA	\$ 6
GENMAICHA	\$ 6
SENCHEA	\$ 6

COFFEE

LATTE	\$ 4.5
FLAT WHITE	\$ 4.5
CAPPUCCINO	\$ 4.5
MOCHA	\$ 5
LONG BLACK	\$ 4
HOT CHOCOLATE	\$ 4.5

ADDITIONAL REQUESTS

EXTRA COFFEE SHOT IN MATCHA / HOJICHA	\$ 3
EXTRA COFFEE SHOT IN COFFEE	\$ 0.5
EXTRA MATCHA / HOJICHA SHOT	\$ 3
OAT / ALMOND / SOY	\$ 0.5
Large	\$ 0.5
Iced	\$ 1
Decaf	\$ 0.5

WATER	ICED / HOT	\$ 3.5
COKE / COKE ZERO	ICED / HOT	\$ 4
RAMUNE	ICED / HOT	\$ 5