

# SOHO SPECIAL BENTO £

25.90

*A combination of Prawn Tempura and Vegetable Tempura, served with 3pcs Salmon sashimi, 3pcs Tuna sashimi, 3pcs Snapper sashimi, Salmon nigiri, Tuna nigiri, Snapper nigiri, Prawn nigiri & 4pcs inside out roll with Tobiko, served with Miso soup.*



## DUCK TERIYAKI SOBA

£ 15.90

*Japanese style thin fried noodles with roasted boneless Duck, vegetables and on top teriyaki sauce.*

## SEAFOOD YAKISOBA

£ 13.90

*Japanese style thin fried noodles with mix seafood, and vegetables.*

## VEGETABLE YAKISOBA 🌱

£ 11.90

*Japanese style fried noodles with mixed vegetables.*

## TARO VEGAN RAMEN 🌱

£ 13.90

*Special broth made from red and white miso, dashi powder, topped with fried tofu, grilled tomato, broccoli, wakame, spring onion, beansprouts and carrots*



## § NEW MENU §

### RAINBOW ROLL (8Pcs)

£16.90

*A rainbow rolled sushi of salmon, tuna, snapper, prawn, and avocado, filled with crabstick and avocado, tobiko on top & eel sauce.*



### BALHAM ROLL (8Pcs)

£15.90

*Salmon and avocado roll topped with salmon, mayonnaise and tobiko on top.*



### SALMON SUSHI

*6 pcs Salmon Nigiri and 6 pcs Salmon Maki*



£16.90

### TUNA SUSHI

*6 pcs Tuna Nigiri and 6 pcs Tuna Maki*

£18.90

### SUSHI & SASHIMI COMBINATION

£18.90

*Sashimi – Salmon × 3, Tuna × 2*

*Nigiri – Salmon, Tuna, Snapper, Prawn*

*Roll – Maki × 2, Inside Out × 2*



## § SPECIAL MENU §

### **TAKO YAKI (6Pcs)**

*Deep fried Octopus balls*



**£8.90**

### **TONKOTSU RAMEN**

*Ramen noodles in thick and Milky, Tonkotsu (Pork Bone) Soup with Chashu (roast pork), beansprout, Seaweed, Spring Onion, red Ginger and boiled egg*



**£14.90**

### **DUCK BENTO BOX**

*Delicious fried roasted boneless Duck with Teriyaki Sauce, soy beans, beansprout, sushi, and sashimi Comes along with miso soup*



**£20.90**

### **DUCK DON**

*Roasted Boneless Duck on Rice with vegetable and Teriyaki Sauce*



**£14.90**

### **CHICKEN KATSU CURRY**

*Rice and Curry in Japanese style with fried breaded chicken breast*

### **CHICKEN TERIYAKI SOBA**

*Fried Noodle with cabbage, onion, carrot, bean-sprout, pepper spring onion and deep-fried chicken on top with teriyaki sauce*



**£13.90**

**£13.90**

### **DRAGON ROLL**

*Sushi Rice with avocado, crabstick, and eel on top  
With tobiko, mayonnaise and Teriyaki sauce*



**£16.90**

IF YOU HAVE ANY FOOD ALLERGIES, PLEASE ASK OUR STAFF BEFORE PLACING AN ORDER – THANK YOU



## § BENTO BOX §

**BENTO BOX IS A TRADITIONAL ASSORTED SET MEALS, ALL BENTO BOX SERVED WITH MISO SOUP**

### **TARO SPECIAL**

*A combination of Taro's delectable specialty which includes beautifully arranged Sashimi set. (Torikaraage – deep fried marinated chicken, Yakitori-grilled chicken, Inari sushi, Prawn Tempura, Salmon Sashimi, Salmon & Prawn sushi, Edamame and Beansprouts)*

**£21.90**



### **CHICKEN TERIYAKI BENTO**

*(With Edamame, Beansprouts, Roll sushi, Prawn & Salmon sushi, Salmon Sashimi.)*

**£19.90**



### **EBI BENTO (Deep-fried Prawn)**

*(With Edamame, Beansprouts, Roll sushi, Prawn & Salmon sushi, Salmon Sashimi.)*

**£19.90**



### **SALMON TERIYAKI BENTO**

*(With Edamame, Beansprouts, Roll sushi, Prawn & Salmon sushi, Salmon Sashimi.)*

**£20.90**



### **UNAJU TERIYAKI BENTO (Grilled Eel)**

*(With Eel Edamame, Beansprouts, Roll sushi, Prawn & Salmon sushi, Salmon Sashimi.)*

**£20.90**



### **VEGETABLE BENTO** 🌱

*(With Tofu steak, Inari sushi, Roll sushi, Koroke, Spinach, Edamame, Beansprouts)*

**£18.90**



### **BEEF TERIYAKI BENTO**

*(With Edamame, Beansprouts, Roll sushi, Prawn & Salmon sushi, Salmon Sashimi.)*

**£20.90**



### **GYUDON BENTO (Stir Fried Beef)**

*(With Edamame, Beansprouts, Prawn & Salmon sushi, Roll sushi, Salmon Sashimi.)*

**£20.90**



### **TONKATSU BENTO (Deep-Fried Pork)**

*(With Edamame, Beansprouts, Roll sushi, Prawn & Salmon sushi, Salmon Sashimi)*

**£19.90**



### **CHICKEN KATSU BENTO BOX**

*(With Edamame, Beansprouts, Roll sushi, Prawn & Salmon sushi, Salmon Sashimi)*

**£20.90**



**IF YOU HAVE ANY FOOD ALLERGIES, PLEASE ASK OUR STAFF BEFORE PLACING AN ORDER- THANK YOU**

## § SIDE DISH §

[Please inform the staff if you want your side dish as starter(s)]

**EDAMAME** 🌱 えだ豆 £ 3.90

*Green Soya beans with salt.*

**SPICY EDAMAME** 🌱 £ 4.50

**HOT EDAMAME** 🌱 £ 4.50

**EDAMAME SPRING ROLL** 🌱 £ 7.90

**CHICKEN GYOZA (4Pcs)** ぎょうざ £ 5.90

*Grilled Chicken dumpling filled with vegetable in Japanese style.*



**EBI GYOZA (4Pcs)** £ 6.90

*Grilled Prawn dumpling filled with vegetable in Japanese style.*

**VEG. GYOZA (4Pcs)** 🌱 野菜ぎょうざ £ 5.90

*Grilled vegetable dumpling in Japanese style.*

**EBI FRIED (Deep-Fried Prawn)** £ 6.90

*2 pieces Deep fried prawn.*

**SHRIMP SHUMAI (4Pcs)** £ 6.90

*Grilled Shumai filled with shrimp and vegetables*



**AGEDOFU (4Pcs)** 🌱 あげ出し豆腐 £ 5.90

**DOUBLE AGEDOFU (8 Pcs)** 🌱 £ 8.90

*Deep fried Bean - curd in mild Soya sauce.*



**TOFU STEAK (3 Pcs)** 🌱 とうふステーキ £ 5.90

*Fried Bean-curd with teriyaki sauce.*

**MIXED SALAD** 🌱 野菜サラダ £ 6.90

*Mixed raw salad in house Japanese dressing with seaweed.*



**YAKI TORI(3 Pcs)** 焼とり £ 5.90

*Grilled chicken with teriyaki sauce on skewer.*



**TORI KARAAGE (6 Pcs)** 鳥唐揚げ £ 7.90



**DOUBLE TORI KARAAGE (12 Pcs)** £ 10.90

*Deep-fried marinated chicken.*

**KOROKKE** 🌱 コロケ £ 3.90

*Fried potato with breadcrumbs and vegetable.*



**TARO SOUP** £ 4.90

*Seaweed soup, tofu, crabsticks, spring onion.*

**BEAN-SPROUT** 🌱 もやし合え £ 4.50

*Boiled bean-sprout marinated with salt and sesame oil.*

**SATSUMA AGE** さつまあげ £ 5.90

*Fried fish cake.*

**MISO SOUP** 🌱 味噌汁 £ 2.50

*Fermented soy beans with tofu, seaweed, and spring onion.*

**SEAWEED SALAD** 🌱 £ 6.90

*Seaweed with Japanese dressing.*



**OSHINKO** 🌱 £ 4.90

*Assorted Japanese pickles.*

**BOILED RICE** 🌱 ごはん £ 2.00

**CURRY** 🌱 £ 3.90

*Japanese curry*

**TERIYAKI SAUCE** 🌱 £ 1.00

**SPICY TERIYAKI SAUCE** 🌱 £ 1.20

IF YOU HAVE ANY FOOD ALLERGIES, PLEASE ASK OUR STAFF BEFORE PLACING AN ORDER – THANK YOU

## § R I C E   D I S H §

### SPICY CHICKEN TERI DON      £12.90

*Spicy Teriyaki chicken on rice with vegetable  
(for takeaway only £9.90)*

### CHICKEN TERI DON      鳥 照 焼 どん £11.90 (for takeaway only £9.90)



### DOUBLE SIZE OF CHICKEN TERI DON      £15.90 *Teriyaki chicken on rice with vegetable. (for takeaway only £13.90)*

### SALMON TERI DON      鮭 照 焼 どん £14.90 *Teriyaki salmon on rice with vegetable.*



### TOFU STEAK DON      とうふステーキどん £11.90 *Fried bean-curd with vegetable and teriyaki sauce on rice.*

### UNA JU      う な 重      £14.90

### WHOLE PORTION OF EEL (UNAJU)      £21.90 *Grilled Eel with sauce on rice.*



### BEEF TERIYAKI DON      牛 照 焼 どん £15.90 *Grilled beef with teriyaki sauce on rice.*

### KATSU DON      か つ ど ん      £13.90 *Fried pork with egg on rice.*



## § RICE/NOODLE JAPANESE CURRY §

### VEG. CURRY      野 菜 カ レ ー      £10.90 *Curry in Japanese style and vegetables with Rice or noodles.*

### CHICKEN CURRY      チキン カ レ ー      £12.90 *Curry in Japanese style and chicken with rice or noodles.*

### TONKATSU CURRY      とん かつ カ レ ー      £13.90 *Curry in Japanese style and breaded pork with rice or noodles.*

### CHICKEN KATSU CURRY      £13.90 *Curry in Japanese style and fried breaded chicken breast with rice or noodles.*



## § M E A T A N D F I S H §

### CHICKEN TERIYAKI      鳥 照 焼 き      £13.90 *Teriyaki chicken with vegetable.*



### SALMON TERIYAKI      鮭 照 焼 き      £15.90 *Grilled salmon with vegetable and teriyaki sauce.*



### BEEF TERIYAKI      牛 照 焼 き      £16.90 *Steak beef with vegetable and teriyaki sauce.*



### TONKATSU      とん かつ      £13.90 *Deep-fried pork with breadcrumbs and salad.*

### CHICKEN KATSU      £14.90 *Deep-fried chicken Breast with breadcrumbs and salad.*

### EBI FRIED (Deep-Fried Prawn)      £14.90 *5 pieces Deep fried prawn with salad.*

IF YOU HAVE ANY FOOD ALLERGIES, PLEASE ASK OUR STAFF BEFORE PLACING AN ORDER – THANK YOU



## § R A M E N §

THIN EGG NOODLE IN SOUP OF SOYA SAUCE

### SEAFOOD RAMEN £13.90

*Noodle in soya soup with Stir-fried seafood with teriyaki sauce, bean-sprout, seaweed, carrot, spring onion and sesame seeds.*

### BEEF RAMEN £15.90

*Noodle in Soya soup with marinated beef, bean-sprout, seaweed, carrot, spring onion and sesame seeds.*

### PORK RAMEN チャーシューラーメン £14.90

*Noodle in Soya soup with sliced pork, Seaweed, bean-sprout and spring-onion.*



### CHICKEN RAMEN チキンラーメン £13.90

*Noodle in soya soup with Stir-fried teriyaki chicken, bean-sprout, seaweed, carrot, spring onion and sesame seeds.*



### SOYU RAMEN しょう油ラーメン £11.90

*Noodle in Soya soup with bean-sprouts, carrot, Seaweed, fish-cake, spring-onion.*

### MOYASHI RAMEN もやしラーメン £11.90

*Noodle in Soya soup with bean-sprouts, seaweed and spring-onion.*

### SPICY RAMEN スパイスラーメン £12.90

*Noodle in Soya soup with spice, carrot, bean-sprouts, fish-cake, seaweed and spring-onion.*

### VEG. RAMEN 野菜ラーメン £11.90

*Noodle in soya soup with mix vegetable.*

## § N O O D L E I N S O U P §

### KAKE UDON かけうどん £9.90

*White noodle with spring onion and Noori in soup.*

### TEMPURA UDON 天ぷらうどん £13.90

*White thick noodle with two pieces of tempura Prawn, Spring onion and Noori in soup.*



### CHICKEN UDON £12.90

*White noodle with spring onion, Noori and deep-fried Chicken in soup.*

### TONKATSU UDON £12.90

*White noodle with spring onion, Noori and breaded deep-fried pork in soup.*

### CHICKEN KATSU UDON £13.90

*White noodle with spring onion, Noori and deep-fried Breaded Chicken breast in soup.*

### TOFU UDON £12.90

*White noodle with spring onion, Noori and fresh Tofu in soup.*

## § EXTRA TOPPINGS §

### NOODLES £1.80

### VEGETABLES £1.80

### EGG £1.50

### TOFU – Fried or Fresh - £2.00

### CHASHU (1Pc) £2.00

## § TEMPURA SUSHI ROLL §

*(Deep fried sushi batter with flour and Tempura batter mixed)*

<b>TEMPURA TARO SPECIAL ROLL</b> <i>(Egg, Crab Stick, Pickle, Avocado, teriyaki Sauce and mayonnaise with Tobiko)</i>	<b>£10.90/5PCS</b>	
<b>TEMPURA WONDER ROLL</b> <i>(Avocado, Cucumber, Salmon, Crab Stick, Tobiko with Mayonnaise)</i>	<b>£7.90/4PCS</b>	<b>£12.90/8PCS</b>
<b>TEMPURA TUNA AVOCADO ROLL</b> <i>(Tobiko with Mayonnaise)</i>	<b>£7.90/4PCS</b>	<b>£12.90/8PCS</b>
<b>TEMPURA TUNA CUCUMBER ROLL</b> <i>(Tobiko with Mayonnaise)</i>	<b>£7.90/4PCS</b>	<b>£12.90/8PCS</b>
<b>TEMPURA CALIFORNIA ROLL</b> <i>(Avocado, Crab Stick with Mayonnaise and Tobiko)</i>	<b>£6.90/4PCS</b>	<b>£10.90/8PCS</b>
<b>TEMPURA SALMON AVOCADO ROLL</b> <i>(Tobiko with Mayonnaise)</i>	<b>£7.90/4PCS</b>	<b>£11.90/8PCS</b>
<b>TEMPURA EEL AVOCADO ROLL</b> <i>(With Teriyaki Sauce, Tobiko and Mayonnaise)</i>	<b>£7.90/4PCS</b>	<b>£11.90/8PCS</b>
<b>TEMPURA CHICKEN TERIYAKI AVOCADO ROLL</b> <i>(With Chicken, Mayonnaise and Teriyaki sauce)</i>	<b>£6.90/4PCS</b>	<b>£10.90/8PCS</b>



*Tempura Taro Special Roll*



*Tempura California Roll*

**IF YOU HAVE A FOOD ALLERGY PLEASE ASK ONE OF OUR STAFF BEFORE MAKING YOUR ORDER – THANK YOU**



# § SUSHI §

RAW FISH, SEA FOOD, VEGETABLE ON  
VINEGARED RICE

(Please inform staff if you would like sushi without wasabi kindly)

## SUSHI A LA CARTE (Nigiri) ア・ラ・カルト

TUNA	鮪	£2.80/1PC
SNAPPER	たい	£2.50/1PC
MACKEREL	サバ	£2.20/1PC
SALMON	鮭	£2.50/1PC
PRAWN	えび	£2.20/1PC
SQUID	イカ	£1.80/1PC
IKURA	イクラ	£3.20/1PC
OCTOPUS	たこ	£1.80/1PC
EEL	うなぎ	£2.60/1PC
TOBIKO	とびっこ	£2.50/1PC
SOFT CLAM	ほっき貝	£2.50/1PC
EGG	玉子	£1.80/1PC
INARI		£1.80/1PC
SCALLOP		£2.50/1PC
YELLOW TAIL		£2.50/1PC

## INSIDE OUT ROLL SUSHI

WONDER ROLL £ 5.90/3PCS  
(Avocado, Cucumber, Salmon, Crab-stick)

CALIFORNIA ROLL £ 4.50/3PCS  
(Avocado, Crab-stick)

SALMON AVOCADO ROLL £ 4.90/3PCS

TEMPURA ROLL £ 9.90/6PCS  
(Deep fried tempura prawn)

SALMON SKIN AVOCADO ROLL £ 4.90/3PCS

TUNA AVOCADO ROLL £10.90/6PCS

CHICKEN CUCUMBER ROLL £ 8.90/6PCS

EEL AVOCADO ROLL £ 9.90/6PCS

## ROLLED SUSHI (Maki)

TUNA ROLL	£ 5.50/4PCS
SALMON ROLL	£ 4.90/4PCS
SPICY TUNA ROLL	£ 5.90/4PCS
PICKLE ROLL 🌿	£ 4.50/4PCS
CUCUMBER ROLL 🌿	£ 4.50/4PCS
AVOCADO ROLL 🌿	£ 4.50/4PCS
THICK ROLL (FUTOMAKI) (Cucumber, Egg, Avocado Crab-stick, Pickle)	£ 7.90/5PCS

## HAND-ROLLED SUSHI (Te-maki) 手巻きずし

SALMON	£ 5.00/PC
EEL	£ 6.00/PC
SALMON AVOCADO	£ 5.50/PC
TUNA	£ 6.50/PC
SPICY TUNA	£ 6.90/PC
IKURA	£ 8.90/PC
CALIFORNIA	£ 4.90/PC
AVOCADO 🌿	£ 4.50/PC
CUCUMBER 🌿	£ 4.50/PC
PICKLE 🌿	£ 4.50/PC

(Hand-rolled sushi can be customized upon request)

## MIXED SUSHI (A) £ 13.90

(7 Pcs Nigiri: Soft clam, Tuna, Salmon, Prawn, Snapper, Squid, Octopus & 4pcs of Roll Sushi)



mixed sushi

## MIXED SUSHI (B) £18.90

(8 Pcs Nigiri: Tuna, Salmon, Prawn, Snapper, Ikura, Soft Clam, Yellow Tail, Scallop, & 1 Pc Salmon Avocado Hand Rolled)



## CHIRASHI SUSHI (A) £13.90

Finely decorated on rice:

(Fresh Tuna, Salmon, Prawn, Eel, Snapper, Squid, Octopus, Soft clam, Egg.)



chirashi sushi

## CHIRASHI SUSHI (B) £18.90

Finely decorated on rice:

(Fresh Tuna, Salmon, Prawn, Snapper, Squid, Octopus, Eel, Soft clam, Yellow tail, Scallop, Mackerel, Egg.)

SALMON CHIRASHI SUSHI £14.90

TUNA CHIRASHI SUSHI £16.90

IKURA CHIRASHI SUSHI £18.90

TUNA SALMON CHIRASHI SUSHI £15.90

IF YOU HAVE ANY FOOD ALLERGIES, PLEASE ASK OUR STAFF BEFORE MAKING AN ORDER- THANK YOU

## § SASHIMI (RAW FISH) さし米 §

TUNA SASHIMI (7 Pieces) £16.90

SALMON SASHIMI (7 Pieces) £ 14.90

MACKEREL SASHIMI (7 Pieces) £ 12.90

SNAPPER SASHIMI (9 Pieces) £14.90

TUNA AND SALMON  
(3 Pcs Tuna, 5 Pcs Salmon) £15.90

SCALLOP SASHIMI  
(4 Pieces) £ 6.90

YELLOW TAIL SASHIMI  
(3 Pieces) £ 6.90

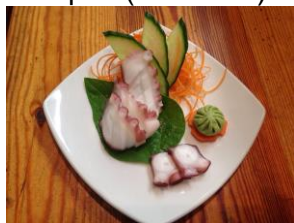
Eel (3 Pieces) £6.90



Tuna (3 Pieces) £7.90



Octopus (4 Pieces) £4.90



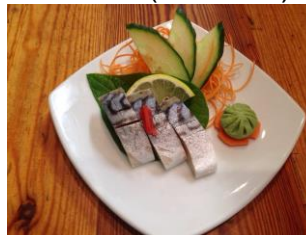
Squid (4 Pieces) £4.90



Salmon (3 Pieces) £6.90



Mackerel (3 Pieces) £5.90



Soft Clam (4 Pieces) £5.90



**MIXED SASHIMI (A) £14.90**

(2 Pcs Tuna, 3 Pcs Salmon, 2 Pcs mackerel,  
2 Pcs Squid And 2 Pcs Snapper)



Mixed Sashimi (A)

**MIXED SASHIMI (B) £31.90**

(3Pcs Tuna, 4Pcs Salmon, 2Pcs Saba,  
2Pcs Squid, 3Pcs Snapper,  
4Pcs Scallop, 3Pcs Yellow Tail 2Pcs soft clam,  
2Pcs Squid with tobiko)



**Extra Sushi Ginger £1.00**

IF YOU HAVE ANY FOOD ALLERGIES, PLEASE ASK OUR STAFF BEFORE MAKING AN ORDER- THANK YOU

# \*COCKTAILS\*

## **LYCHEE MARTINI COCKTAIL**



£7.90

(Holy grass Vodka, Lychee juice, coconut syrup and fresh lime juice)

## **TARO COCKTAIL**



**£7.90**

(Shochu, Plum wine, Mango

Juice)

## **YUZU & ELDERFLOWER SPRITZ**



**£6.90**

(Sake, Yuzu juice, Elderflower Extract)



## § D R I N K S §

### SHOCHU (JAPANESE SPIRIT)

KURO KIRISHIMA £5.90 (70ml) / £48 (900ml)



DAIYAME £6.90 (70ml) / £51 (900ml)



### TEA

HONEY CITRON TEA

£3.50



### JAPANESE SODA

RAMUNE (200ml)

BOTTLE

£ 3.50



Please visit: [www.tarorestaurants.uk](http://www.tarorestaurants.uk)

**MINIMUM CHARGE £5.00 PER PERSON**

**A discretionary 10% Service Charge will be added to your bill**

**IF YOU HAVE ANY FOOD ALLERGIES, PLEASE ASK OUR STAFF BEFORE PLACING AN ORDER – THANK YOU**

# § D R I N K §

## WHITE WINE

DU TOITSKLOOF CHARDONNAY (France)  
PINOT GRIGIO 'PORTA ITALICA' (Italy)  
MACON-LUGNY (France)

## BOTTLE

£20.90  
£25.90  
£35.60

## GLASS (125ml)

£ 5.90

## RED WINE

DU TOITSKLOOF SHIRAZ  
MACON-PIERRECLOSS

£ 20.90  
£ 35.90

## ROSE WINE

ANJOU ROSE

£ 24.90

## PLUM WINE (With Ice)

£ 31.90

£ 4.90 (70ml)

## BEER

ASAHI SUPER DRY 330ML  
ASAHI SUPER DRY 500ML  
KIRIN LAGER BEER 330ML

£ 4.90  
£ 6.90  
£ 4.90

## SAKE HOT

OZEKI SMALL (125ml)  
OZEKI LARGE (250ml)

## FLASK

£ 5.90  
£ 8.90



## SAKE COLD

OZEKI DRY 375ML  
OZEKI DRY 750ML

## BOTTLE

£ 16.90  
£ 30.90



## SOFT DRINK

STILL WATER (Large)  
STILL WATER (Small)  
SPARKLING WATER (Large)  
SPARKLING WATER (Small)  
COCA COLA - ZERO  
COCA COLA  
DIET COLA  
TANGO  
7UP  
RAMUNE

## BOTTLE

£ 5.90  
£ 3.50  
£ 5.90  
£ 3.50  
£ 2.90  
£ 2.90  
£ 2.90  
£ 2.90  
£ 2.90  
£ 3.50

## JUICE

MANGO  
APPLE  
ORANGE

## GLASS

£ 2.90  
£ 2.90  
£ 2.90

## TEA

HOT GREEN TEA  
POT OF HOT GREEN TEA  
COLD GREEN TEA  
HONEY CITRON TEA

£ 1.90  
£ 5.90  
£ 2.90  
£ 3.50



Please visit: [www.tarorestaurants.uk](http://www.tarorestaurants.uk)

MINIMUM CHARGE £5.00 PER PERSON

A discretionary 10% Service Charge will be added to your bill

IF YOU HAVE ANY FOOD ALLERGIES PLEASE ASK OUR STAFF BEFORE PLACING AN ORDER – THANK YOU

## ✧ DESSERTS ✧

MATCHA CHEESECAKE \*

£6.90



MOCHI ICE CREAM \*\* (Pounded sticky rice formed around mango flavoured ice cream filling) £4.90



JAPANESE CAKE \*\*\* (Pounded sticky rice formed around a red bean filling)

£4.00



JAPANESE GREEN TEA ICE CREAM \*\*\*\*

£4.90



DORAYAKI \*\*\*\*\* (Traditional Japanese pancake)

£4.90



\*(It contains milk, wheat, eggs, sesame, nuts)    \*\* (It contains Milk, soya)

\*\*\* (It contains Milk, sesame)    \*\*\*\* (It contains milk)    \*\*\*\*\* (It contains egg)